



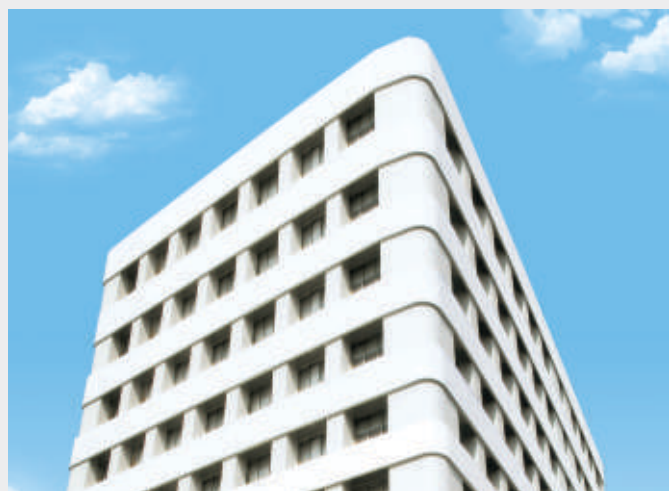
TECH-UP FOR THE FUTURE

B Tech | MBA Tech | MCA | M Tech | Ph D

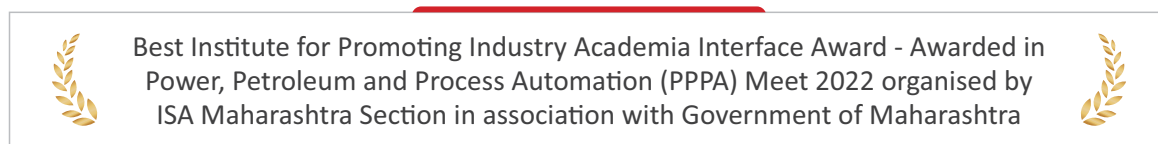
About Mukesh Patel School of Technology Management & Engineering (MPSTME)

Mukesh Patel School of Technology Management & Engineering (MPSTME) was established to provide an innovative and well integrated technological education that is in tune with the dynamic industry and societal trends. It addresses the need developing for industry ready engineers and techno-managers with the required technical expertise and the right skill set to help create tomorrow's technology today.

MPSTME has been consistent in maintaining excellence in the academic standards since its inception. Learning has always been an enjoyable experience here, with experienced Faculty, Inspiring Libraries, Stimulating Discussions in Classrooms and State-of-the-art advanced Labs.



Approvals, Accreditations & Awards

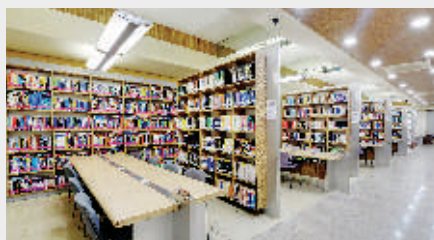


*Applicable for B.Tech (Civil), B.Tech (Computer Engineering), B.Tech (Electronics and Telecommunication), B.Tech (Mechanical Engineering) & B.Tech (Information Technology)

Our Infrastructure



Classroom



Library



Material Testing Laboratory



Bosch Mechatronics & Robotics Lab



Canteen



Recreation

International Linkages



VIRGINIA TECH.

Virginia Tech University,
Blacksburg, Virginia,
USA



University of New South
Wales (UNSW),
Australia



Stevens Institute of
Technology,
USA



University at
Buffalo (UB),
USA



Binghamton
University,
USA



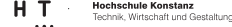
Hochschule Karlsruhe
University of Applied
Sciences, Germany



Cranfield University,
UK



Monash University,
Australia



HTWG Konstanz
University of Applied Sciences,
Germany



Santa Clara University,
California, USA

Top reasons to study at MPSTME



Regular upgradation of syllabus to include advancements in technology, choice and flexibility



International collaborations with premier institutions across the world



Academically strong, highly experienced, well qualified and research oriented faculty



Excellent placement opportunities



Exposure to research methodology through Student Research Groups working on real life R&D and industry projects



Dual Degree and Integrated programs

Learning at MPSTME

Graduate Programs

B Tech (after 12th)

- Four year full-time program

Eligibility

- 10+2 or equivalent exam
- 45% marks in PCM/Vocational Subject
- Diploma Engineering with minimum 45% marks
- Those awaiting their 10+2 or equivalent exam result may also apply



Mechanical Engineering



Computer Engineering



Civil Engineering



Mechatronics



Electronics & Telecommunication



Information Technology



Data Science



Artificial Intelligence



Cyber Security



Know more

B Tech 3+1+1 Program in Collaboration with Virginia Tech, USA

- Opportunity to earn 3 degrees (BTech from NMIMS, BS and MS from Virginia Tech, USA)
- Study at Virginia Tech USA Campus during last 2 years of the program
- Opportunity for OPT up to 3 years post study in USA
- Blend of Computer Engineering (Data Science), Cybersecurity Management, Analytics and Business Administration
- Career Opportunities in Data Science, Software Development, Cybersecurity Management, Analytics and Business Analytics



Computer Science and Engineering (Data Science) – (3+1+1 Program)



Know more

B Tech Programs in Academic collaboration with Virginia Tech, USA

- Four year full-time program
- 4 courses taught by VT professors



Data Science



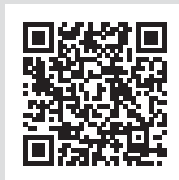
Computer Science & Engineering (Cyber Security)



Artificial Intelligence



Know more



Know more



Know more

B Tech Program in collaboration with Tata Consultancy Services

- Four year full-time program
- Curriculum designed and support by TCS



Computer Science and Business Systems (CSBS)



Know more

MBA Tech (B Tech + MBA after 12th)

- Five year full-time Integrated program
- B Tech (CE/IT/DS/AI) + MBA in Technology Management
- Six months internship for practical management learning
- Choice of MS degree in 6 months from Stevens Institute of Technology, USA (International Affiliation)

Eligibility

- 10+2 or equivalent exam
- 45% marks in PCM/Vocational Subject
- Diploma Engineering with minimum 45% marks
- Those awaiting their 10+2 or equivalent exam result may also apply



Information Technology



Computer Engineering



Artificial Intelligence



Data Science



Know more

Master Degree Programs

MCA

- Two year full-time postgraduate program
- Six months of Industry Internship
- Wide range of electives offered from second semester onwards

Eligibility

- BCA / Bachelor Degree in Computer Science Engineering or equivalent Degree with 50% marks
- Passed B.Sc / B.Com / B.A with Mathematics at 10+2 level or at Graduation Level with 50% marks



Master of Computer Applications



Know more

M Tech

- Two year full-time postgraduate degree program

Eligibility

- BE / B Tech (all streams) or equivalent with 50% marks
- M Sc Mathematics, Statistics, Computer Sciences, IT, Electronics or MCA or AMIE



Artificial Intelligence



Data Science



Know more

Doctoral Degree Program

Ph D

- A robust research program to conduct research in core and emerging areas

Engineering

Eligibility

- Master's degree in ME / MTech with at least 55% marks in aggregate
- Equivalent grade 'B' in the UGC 7-point scale

Technology Management

Eligibility

- Master's degree in ME / MTech / MBA with BE or BTech or MCA with at least 55% in aggregate
- Equivalent grade 'B' in the UGC 7-point scale

Applied Mathematics / Applied Physics

Eligibility

- MPhil or Masters degree in Applied Mathematics / Physics with at least 55% in aggregate
- Equivalent grade 'B' in the UGC 7-point scale

Top Recruiters

MPSTME is one of the most preferred campus for job placements by leading corporates. It has corporate linkages with over 300 companies which regularly conduct campus recruitment for Final Placements and Summer Internship. We are passionate towards grooming the students not only as efficient professionals but also as responsible citizens, it is our continuous endeavor to make all our students industry-ready. Over the last decades, the Institute has emerged as one of the most favored destination for hiring fresh talent from the campus. It endeavors to provide industry compliant talent and emphasizes on quality, discipline and ethics.

The placement model at MPSTME is a five stage process, involving the pre-placement activities, career guidance talk, counselling students on job opportunities, executing placement and post-placement reviews. In addition to providing placement support to the students, the Institute also facilitates continuous institute-industry interactions, alumni activities, participation in competitions, seminars and conferences, facilitating industry visits and inviting distinguished speakers from the Industry.

B Tech	Amazon	Oracle	Goldman Sachs
Shapoorji Pallonji	Adani Group	JSW	Royal Enfield
ZS Associates	PWC / KPMG EY / Deloitte	L&T Technology Services	Tata Communications

Placements Batch 2023 | Highest CTC – 21 LPA | Average CTC – 9.68 LPA

MBA Tech	Bloomberg	Morgan Stanley	Barclays
Deloitte	KPMG	Hpe	Accenture
Hapag Lloyd	Adidas	Kansai Nerolac Paints	Schlumberger

Placements Batch 2023 | Highest CTC – 22 LPA | Average CTC – 10.55 LPA

☎ 1800 102 5138 (Tollfree)

✉ enquiry.mpstme@nmims.edu / admissionenquiry@nmims.edu

Mukesh Patel School of Technology Management and Engineering,
Junction of Irla Lane and Gulmohar Road, Opp. Cooper Hospital, Vile Parle (W), Mumbai – 400 056.

[f /NMIMS.Engineering/](https://www.facebook.com/NMIMS.Engineering/) | [t /NMIMS_MPSTME](https://twitter.com/NMIMS_MPSTME) | [i /Mpstme](https://www.instagram.com/Mpstme)

Scan to Locate Us

